



Flinders

QuietBack™ Carpet Tiles

acoufelt
making quiet

Product Detail

Product	Flinders Carpet Tile
Application	Floor
Composition	QuietBack™
Material	100% solution dyed nylon
Style	Multi-level textured loop pile
Content	Backing made from >80% recycled PET
Tile Dimensions	500 x 500mm
Thickness	8mm
Tiles per box	20

Guarantees

Wear Warranty	20 years*
Castor Chair Proof	20 years*
Anti-Static	Lifetime*
Colorfast	20 years*
Classification	Commercial Extra Heavy Duty

*conditions apply



QuickShip available



Technical Data

Dimensional Stability	ISO 17984, -0.05%
Electrostatic Propensity	AATCC 134 ≤ 1000V
Light Fastness	ISO 105-B02, 6-7
Thermal Resistance	0.2m ² K/W
Fire Test Method	AS/ISO 9239.1-2003
Critical Heat Flux	Mean result 4.9kW/m ²
Smoke Deviation Rate	Mean result 187%.min
Fire Test Method	ASTM E648 Class 1
Critical Heat Flux	Average, 0.54kWm ²
Smoke Density Test Method	ASTM E662 (Flaming)
Smoke Density Test Method	450 or less
Fire Test Method	EN 13501-1:2019
Critical Heat Flux	Cfl
Smoke Deviation Rate	s1
Antimicrobial Effectiveness	AATTCC Method 174:2016 Part II

Sustainability

- One square meter diverts 36 x PET (600ml) drinking bottles from landfill
- LBC Red list free
- Phenol & formaldehyde free
- Total VOC's 0.5 mg/m
- Recognised under LEED



Backing made from 80% min. recycled content



Declare Living Building Challenge compliant



Generated using 40% solar energy



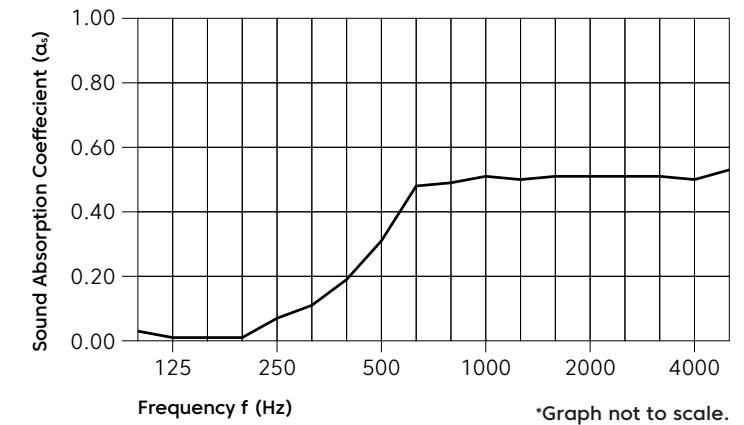
Recyclable at end-of-life



Declare.

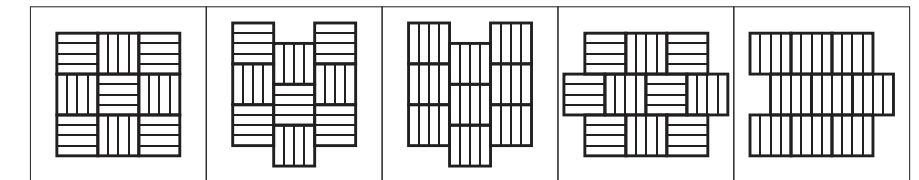
Acoustic Performance

Sound Absorption ASTM C423, NRC 0.35



Frequency (Hz)	125	250	500	1000	2000	4000	NRC
α _s	0.01	0.07	0.31	0.51	0.51	0.50	0.35

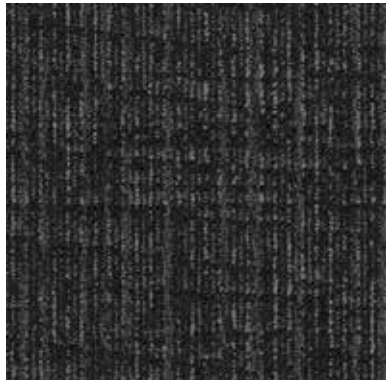
Installation Method



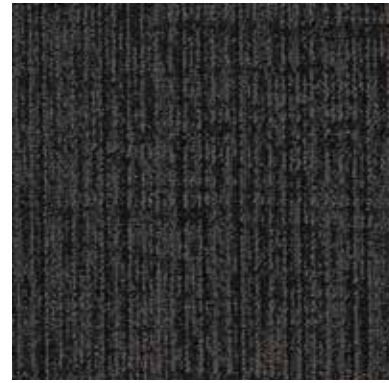
Quarter Turn Vertical Stair Step Vertical Horizontal Stair Step Horizontal Brick



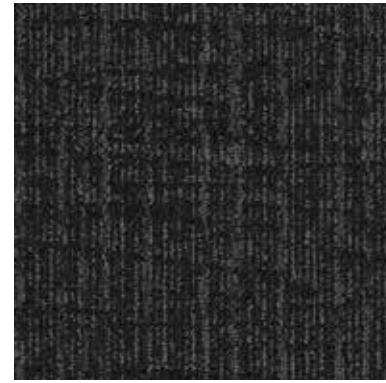
Colorways



Ikara Place*



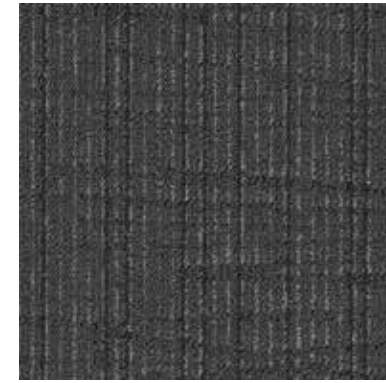
Western Grey*



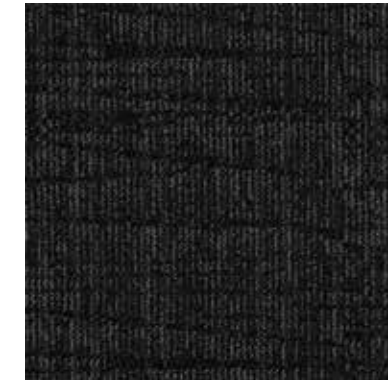
Sliding Rock*



Monsoonal Wind*



Shale Outcrop*



Pichi*



Embankment



Outback



Marree

*NZ stock colours